

## Valuable Comments from Past Participants

“This was not only enjoyable, but gave me a lot of ideas I can actually use because you not only provided ideas, but materials to carry out the lessons— THANKS THANKS THANKS.”

“I cannot begin to tell you how much I appreciate the hard work and dedication you all put into this workshop. Teachers spend a lot of out-of-pocket money to purchase teaching materials, etc. This workshop has provided a wealth of treasures for us to use in the classrooms! I have learned much about mining this week and will use my knowledge to inform my children about our great natural resources.”



Tours provide opportunities to explore to see and touch rocks, as well as collect samples for use in the classroom

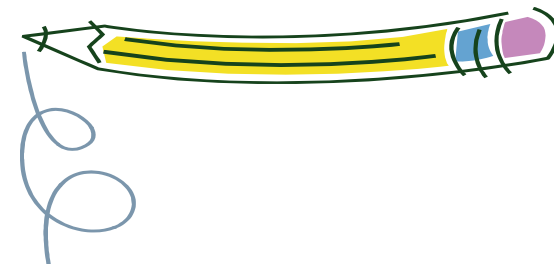


Want more information about the  
Missouri Teachers Workshop?

Rhonda Reed  
Missouri Minerals Education  
Foundation  
18594 Hwy KK  
Boss, MO 65440  
573-626-3315  
573-626-3334 (fax)  
rreed@doerun.com  
www.mmef.org



## Missouri Teachers Workshop



Rocks, MINERALS  
AND OUR ENVIRONMENT



Learn creative ways to teach  
earth science to K-9  
students.

Presented by the Missouri Minerals  
Education Foundation

# Missouri Teachers Workshop: Rocks, Minerals and our Environment



Field trips allow the teachers to see industry in action and relate products to our everyday life.

The Curriculum is designed around rocks, minerals, and the environment. All activities are tied to the State's "Show-Me" standards and GLE's. Sessions will include hands-on individual and group activities. Each participant will receive one each rock and minerals kit containing 18 specimens, minerals test kit, mineral / rock environmental poster, video with teacher's manual, and a CD full of lessons and activities; and will be involved in various facets of earth science including mineral and rock identification, resolving environmental situations, making concrete, limestone—its origin and uses, making toothpaste, chocolate chip cooking mining, peanut mining, rocks and minerals in our homes, and more!

Presenters will be people working in and from the mining industry, from Government Agencies, Teachers, Universities, and Educational Material Organizations. Guest speakers within and outside the state will spark enthusiasm with lively and interesting talks. This is an opportunity to interact with and ask questions of industry leaders and others.

No workshop is complete without observation field trips where you will see first hand what is being presented and taught.



Paste with Taste—one of the many hands-on activities you will learn.

## Answers to FAQs

Room accommodations are on your own.

There will be a get-acquainted pizza party Sunday evening. A hot breakfast will be provided on Monday and lunches will be provided Monday through Thursday. There will be several optional dinner events (no cost to you) during the week.

Registration fee is fully refundable.

Qualifies for CEU credit.

Optional 2 Graduate or Undergraduate credits are available through Lincoln University for a per credit hour fee which will be updated on the Registration Form.

Field trip participation is required for credit.

**Make plans now to attend the next workshop.**

**Space is limited to the first 60 teachers, so register early.**

**Go to the MMEF website for current information and the registration form.**  
[www.mmef.org](http://www.mmef.org)